



ISSN (P): 2522-6614
ISSN (E): 2522-6622
© Gynaecology Journal
www.gynaecologyjournal.com
2021; 5(2): 66-67
Received: 10-01-2021
Accepted: 15-02-2021

Dr. Jignesh K Prajapati
Resident doctor (R2)
C.U. Shah Medical College,
Saurashtra University,
Surendranagar,
Gujarat, India

Dr. Bipinchandra R Shah
Professor and H.O.U
obs & gynaec department,
C.U. Shah Medical College,
Saurashtra University,
Surendranagar, Gujarat, India

A case report on placenta accreta presenting obstetric emergency

Dr. Jignesh K Prajapati and Dr. Bipinchandra R Shah

DOI: <https://doi.org/10.33545/gynae.2021.v5.i2b.866>

Abstract

Placenta accreta is a potentially life-threatening obstetric condition that requires a multidisciplinary approach to management. As the incidence of Caesarean has increased, Placenta accreta also has increased and is considered as an important cause of maternal and fetal/neonatal morbidity and mortality. Although multiple caesarean deliveries are at the largest risk factor for the placenta accreta, increasing maternal age and parity, as well as other uterine surgeries are also important. In patients at risk for accreta, obstetrical ultra sonography performed by an experienced provider should be obtained. A multidisciplinary team in a centre with expertise in managing placenta accreta should care for case of suspected accreta.

Keywords: Caesarean, Hysterectomy, Obstetric haemorrhage, Placenta accreta

Introduction

Placenta accreta is a potential grievous obstetric condition that calls for a multidisciplinary team for timely management. Placenta accreta refers to placenta that abnormally attaches directly onto or into the myometrium [1]. Three levels of abnormal placental attachments are outlined according to the degree of invasion, namely Placenta accreta - the uterine deciduas is absent and the chronic villi attaches to the myometrium directly. Placenta increta-the chronic villi invades into the myometrium. Placenta percreta-the chronic villi encroach through the myometrium and may permeate to close by organs [2]. It is also colligated with Placenta previa. Clinically placenta accreta becomes baffling during delivery when the placenta does not entirely torn from the uterus and is ensued by massive obstetric hemorrhage, leading to disseminated intravascular coagulopathy; the need of hysterectomy; surgical injury to the ureter, bladder, bowel, or neuromuscular structures; acute transfusion reaction; electrolyte imbalance; and renal failure. The average blood loss at delivery in women with placenta accreta is 3000-5000 ml⁴. The incidence of placenta accreta is 1 in 2500 2 But there is a run-up in the frequency of placenta accreta 3%, 11%, 40%, 6 1% and 67% in first, second, third, fourth and fifth caesarean it seem to be parallel to the increasing cesarean delivery rate. The ultrasound and magnetic resonance image (MRI) may or may not indicate clearly an invasive placenta, however final diagnosis is made intra operatively and supported by histopathological examination.

Case Report

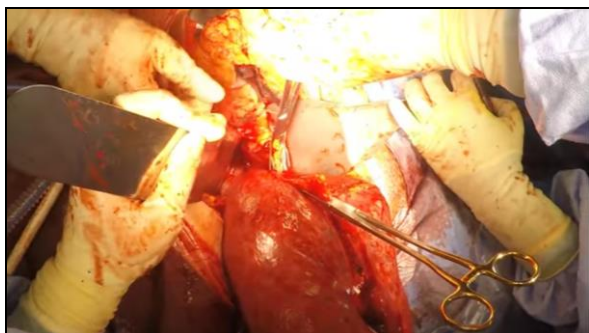
A 25 years old married Indian female; G4P2L2A1; with previous 2 cesarean section presented with bleeding pv to the emergency department. Her gestational age was 30 wks 6days by LMP. She had a history of bleeding per vaginum since 2 hours. The antenatal period was uneventful until her presentation at 30 weeks 6 days of gestation with bleeding per vaginum. She was hemodynamically stable, no c/o scar tenderness, blood pressure 132/84 and pulse 88/min and low volume. On abdominal examination, the uterine contour was intact, uterus 30 wks size, relaxed transverse lie. The fetal heart rate and rhythm found normal. The decision for caesarean section was made with the provisional diagnosis of placental previa. Emergency cesarean section was taken. Injection betnasol and 2 unit pcv given pre-op. She was taken to the operating theatre. General anesthesia was given. Lower segment caesarean section was done revealing clear amniotic fluid. Placenta was lying posteriorly reaching upto os. A live male baby was delivered by LSCS. A part of placenta extracted out. But some part of placenta (3x3 cm) was centrally adherent lower uterine segment and diagnosis of placenta accreta was made intra operative. Uterus was flabby irrespective of uterotonics. Urgent decision of bilateral uterine

Corresponding Author:
Dr. Jignesh K Prajapati
Resident doctor (R2)
C.U. Shah Medical College,
Saurashtra University,
Surendranagar, Gujarat, India

artery ligation was taken i/v/o placenta accreta but bleeding does not stop so decision of obs. hysterectomy was taken. 3 units of pcv, 4 units of ffp & 3 units of pc were transfused intra operatively. & was transferred to the intensive care unit. She recovered well and was discharged on 8th postoperative day. The specimen was sent for histopathological examination which reveals placental villi extending deeply into the myometrium of the lower uterine segment, suggestive of placenta accreta in the lower uterine segment.

Discussion

The relative incidence of all sorts of placental adhesion (placenta accreta, increta and percreta) has been up rising for the past two decades, due to increasing caesarean section rates. Other predisposing conditions are instrumentation of the endometrium, placenta praevia, uterine malformations, septic endometritis, previous manual removal of placenta and multiparity. A risk of placenta accreta exists in 2 to 5% with any case of placenta previa. Antecedently, a conservative treatment, aiming at uterine rescue, was followed to a greater extent, based upon manual removal of as much placental tissue as possible. Fox *et al.* reported that 25% of the women died during this treatment [3]. Under these circumstances, the conservative treatment can be achieved only in cases of a partial placenta accreta/ increta, when bleeding is minimal. Alternative interventions include ligation of internal iliac artery, or angiographic embolization. There are a number of risk factors leading to hemoperitoneum during pregnancy. Previous gynecological procedures, pregnancies, infections and curettage, trophoblastic disease, and endometrial or cervical malignancies favor such an occurrence. [4] Spontaneous uterine rupture may also follow adenomyosis, instrumental termination, manipulations during labor, misoprostol-induced labor, or cocaine misuse. In some cases, no cause can be identified, and these are considered idiopathic. Magnetic resonance imaging and Doppler sonography can be used for the prenatal diagnosis of placenta increta [5] However, the diagnostic value of sonography in prenatal diagnosis of an asymptomatic placenta increta is uncertain. A positive predictive value of 78% and a negative predictive value of 94% has been reported by Finberg *et al.*, but some of other authors suggested that sonography might detect only around 33% of cases of placenta accreta/increta. Regarding treatment, hysterectomy is probably the best option for long-term outcome, as previously reported. Numbers of attempts have been made to treat placenta increta with various drugs to allow the pregnancy to continue. [6] Methotrexate, is the drug most widely used, although its safety and the efficacy in this setting are questionable.



Conclusion

It is a potential life threatening condition for both mother and baby. In Spite of early diagnosis of placenta accreta/increta through MRI, Hysterectomy remains a common procedure. This

case highlights need for further research into the prevention of abnormal placental development and to prevent their risk of massive hemorrhage.

Acknowledgements

Author would like to thanks Dr. Bhavesh airao, Head Of Department, obs & gynaec department, c.u. shah medical college, surendranagar. for his contribution for the successful completion of this research article.

Funding: No funding sources

Conflict of interest: None declared

Ethical approval: Not required

References

1. Stocker J, Dehner L. Pediatric Pathology Volume One Lippincott Williams and Wilkin. USA 2001.
2. Gielchinsky Y, Rojansky N, Fasouliotis S. Placenta Accreta - Summary of 10 Years: A Survey of 310 Cases Placenta. 2002;23:210-4.
3. Shellhaas CS, Gilbert S, Landon MB, Varner MW, Leveno KJ, Hauth JC *et al.* The frequency and complication rates of hysterectomy accompanying cesarean delivery. Eunice Kennedy Shriver National Institutes of Health and Human Development Maternal-Fetal Medicine Units Network. Obstet Gynecol 2009;114:224-9.
4. Yang JJ, Xiang Y, Wan XR, Yang XY. Diagnosis and management of uterine arteriovenous fistulas with massive vaginal bleeding. Int J Gynaecol Obstet 2005;89:114-9.
5. Gielchinsky Y, Rojansky N, Fasouliotis SJ, Ezra Y. Placenta accreta-summary of 10 years: a survey of 310 cases. Placenta 2002;23:210-4.
6. Crespo R, Lapresta M, Madani B. Conservative treatment of placenta increta with methotrexate. Int J Gynecol Obstet 2005;91:162-3.